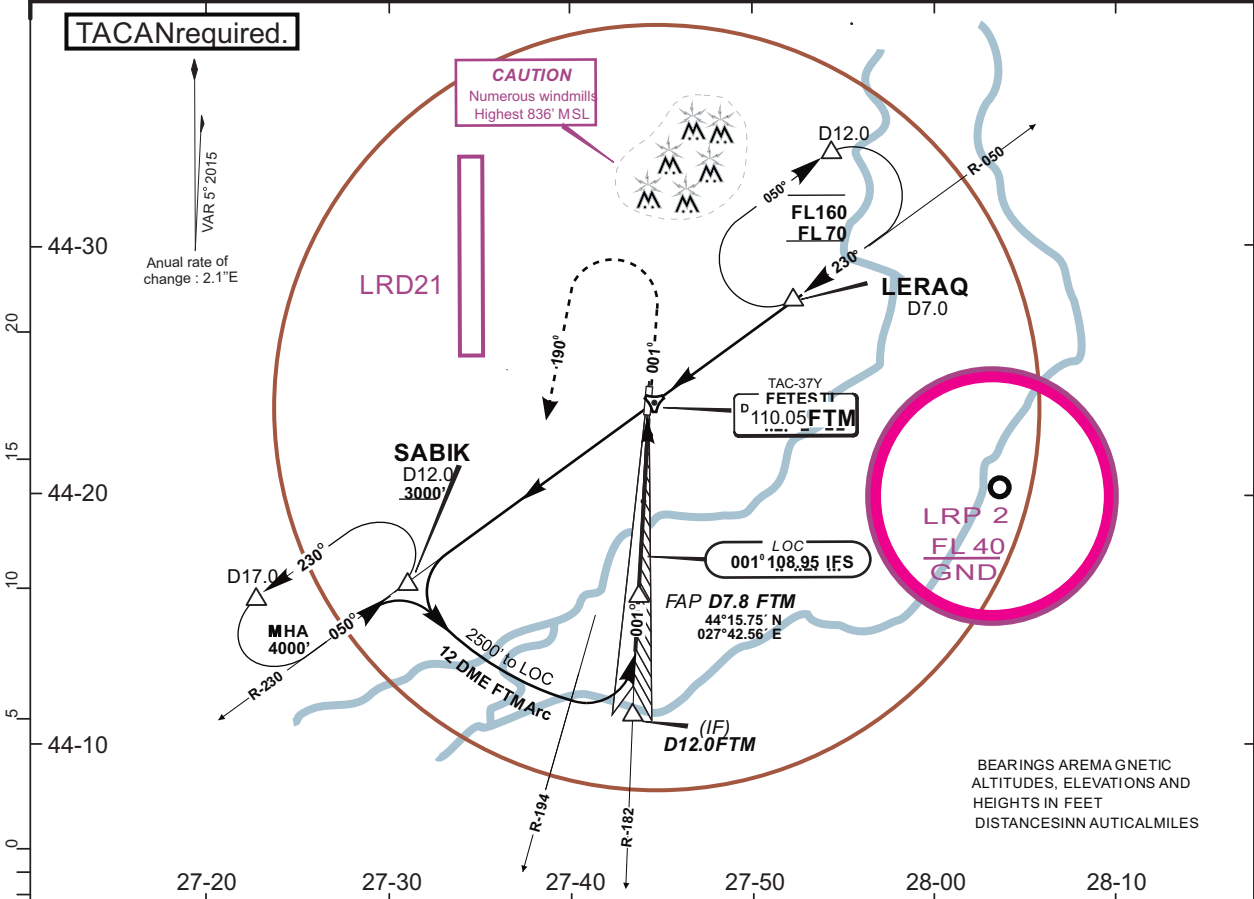


LRFT/FTM
BORCEA-FETESTI

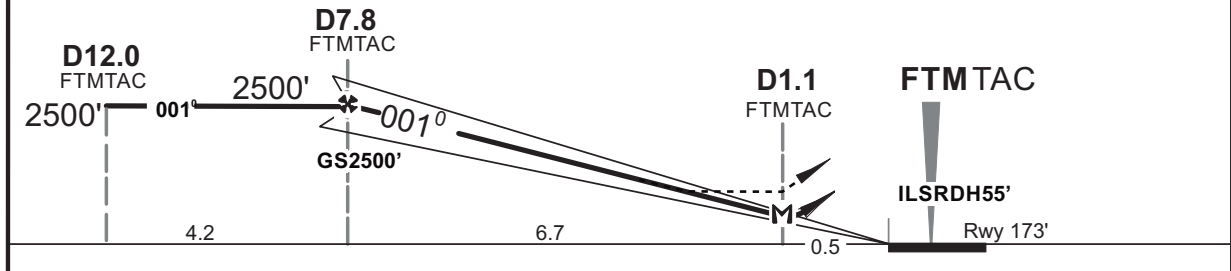
FETESTI, ROMANIA
HI/LO ILSRwy 36

BRIEFING STRIP™

ATIS 122.525		RUBIN Approach 123.375/309.625		RUBIN Tower 119.325/232.850		
LOC IFS 108.95	Final Apch Crs 001°	GS D7.8 FTM TAC 2500' (2327')	ILS DA(H) Refer to Minimums	Apt Elev 183' Rwy 173'		
MISSED APPROACH: Climb on RWYHDG to 1500' then turn left Hdg 190° climbing to 3000' to intercept R-230 FTM TACAN						
Alt Set: hPa		Rwy Elev: 7 hPa		Trans level: ByATC		Trans alt: 4000'



LOC (GSout)	FTMDME	7.0	6.0	5.0	4.0	3.0	2.0
	ALTITUDE	2212'	1893'	1574'	1256'	938'	619'



Gnd speed-Kts	70	90	100	120	140	160		1500'	Hdg 190° 3000'	R-230 FTM TAC	
ILSGSor LOCDescentAngle	3.0°	377	484	538	646	753					861
MAPat D1.1 FTM TAC											

Standard. STRAIGHT-IN LANDING RWY 36				LOC(GSout)		CIRCLE-TO-LAND		
A: 373' (200')		C: 383' (210')		DA(H) 600' (427')		Max Kts	MDA(H)	VIS
B: 373' (200')		D/E: 393' (220')		ALSout				
A						100	675'/(502')	1600m
B	RVR 550m	RVR 750m	RVR 1200m	RVR 1000m	RVR 1600m	135	675'/(502')	2000m
C						180	775'/(602')	2400m
D	RVR 800m	RVR 1000m	RVR 1600m	RVR 1800m	RVR 2500m	205	790'/(617')	4800m
E						250	790'/(617')	4800m